



Annual Production Sale
Saturday, March 18, 2023, 5:30 (CT)
Kirksville Livestock Market
Kirksville, Missouri



115 Lots Sell

49 Gelbvieh and Balancer Bulls || 66 Gelbvieh and Balancer Influenced Heifers

Ertel Cattle Co Bull Sale Information

First Breeding Season Guarantee

Buyers of all bulls selling for \$3,000.00 or more that are injured the first breeding season, will have credit with Ertel Cattle Company at the value of the purchase price minus salvage value. Contact us promptly so the decision to return the bull to us or to sell the bull by the buyer may be made. Any bulls sustaining injury must have a licensed Veterinarian inspection at buyers expense. Breeding season is defined as the 90 day period following the first turnout of the bulls. Any issues must be reported by October 1, 2023. Credits must be used on the purchase of 1 bull only in the next Ertel Cattle Company Production Sale. No warranty shall exceed the original purchase price of the bull and no warranty can be used on a warranty bull. Buyers who choose to freeze semen on a bull prior to or during the first breeding season has the warranty fulfilled with the semen you froze. This is not an insurance policy. We highly recomend you purchase insurance on the bulls you purchase. Your bull is an investment and should be treated as such. Overworked, under cared for, or mismanaged bulls can not be replaced.

In case of death during the first breeding season, a 25% credit will be given toward the purchase of another bull in the next Ertel Cattle Company Production Sale. Any claims must be made prior to October 1, 2023.

Health

All bulls selling have passed a complete breeding soundness exam and sell as guaranteed breeders. Health papers and semen evaluation papers are available on all bulls selling. Scrotal measurements will be available for all bulls selling on a supplement sheet sale day.

Insurance

We highly recommend retaining insurance on your purchases. We suggest and can help you get insurance arranged following the sale. If your purchase goes back to Ertel Cattle Co following the sale, please retain insurance. When the bull sells he becomes responsibility of the buyer. Insurance will be available sale day.

Sight Unseen Purchase Guarantee

All bulls sell under a sight unseen purchase guarantee as long as you contact Ertel Cattle Co or Mitchell Marketing Services to get information on the bulls of your interest. Ertel Cattle Co or MMS must handle your purchases for sight unseen guarantee. Bulls sold on DVAuction are not covered by sight unseen purchase unless contact is made to MMS or Ertel Cattle Co to get information on the bulls of your interest.

Ertel Cattle Company Semen Interest

Ertel Cattle Company is retaining 50% semen interest in all bulls selling. Buyer purchases full possession and 50% semen interest.

ECC Bull Vaccination Program	ECC Fall Heifer Vaccination Program	Spring Open Heifer Vaccination Program
<p>August 2022 Synathic Dewomer Calvery 9 Bovi-Shield Gold FP5 L5</p> <p>September 2022 Multi-Min Cydectin Inj Vista Once Sq Calvery 9</p> <p>December 2022 Clean-Up II Cydectin Inj</p> <p>February 2023 ViraShield 6 VL5 HB Clean Up II Fusogard (Foot Rot)</p>	<p>February 2022 Clean Up II Calvery 9 Moraxella Bovis Bacterin Pyramid 5 + Presponse SQ</p> <p>April 2022 Moraxella Bovis Bacterin Calvery 9 Cydectin Inj Vista Once Sq</p> <p>October 2022 Vira Shield 6 VL5-HB Cydectin Inj Calvery 9</p> <p>February 2023 Virashield 6 VL5 HB Calvery 9 Cydectin Inj Clean-Up II</p>	<p>April 2022 Vista Once SQ Calvery 9 Moraxella Bovis Bacterin</p> <p>August 2022 Synathic Dewomer Calvery 9 Bovi-Shield Gold FP5 L5</p> <p>September 2022 Multi-Min Cydectin Inj Vista Once Sq Calvery 9 Estramate</p> <p>February 2023 ViraShield 6 VL5 HB Calvery 9 Cydectin Inj Clean-Up II</p>



Annual Production Sale

Saturday, March 18, 2023, 5:30 (CT)
Kirksville Livestock Market
Kirksville, Missouri

115 Lots Sell

49 Gelbvieh and Balancer Bulls
24 Registered Gelbvieh and Balancer Females
42 Commercial Balancer Influenced Bred and Open Heifers

Sale Day Phones

Ginger Ertel 660-234-5265
Bill Ertel 660-341-1997
Chris Mitchell 334-695-1371

Auctioneer

Jared Miller 515-608-0953

Sale Facility Location

Kirksville Livestock Market 660-665-9804
24295 Benton Road
Kirksville, MO 63501

Viewing of Sale Bulls

Bulls may be viewed at Ertel Cattle Company until March 16, then will be available for viewing at Kirksville Livestock Market on March 17 & 18.

Terms & Conditions

Terms are cash or check, and settlement must be made sale day before any cattle leave the sale facility. All cattle sell under the standard terms and conditions as suggested by the American Gelbvieh Association. When bulls are sold they become the responsibility of the buyer.

Show-Me-Select Qualifying Bulls

Many bulls that qualify for ShowMe Select are selling. The bulls that qualify are denoted in the pedigree of each animal.

Sale Offering Videos

View videos of the sale offering online at www.ertelcattle.com, www.mms.bz, and www.dvauction.com

Liability

All persons attending the sale do so at their own risk. Ertel Cattle Company, Kirksville Livestock Market or the sale management assumes no liability for accidents, theft or damages occurring at the sale facility.

EPDs

All EPDs are current as February 18, 2023 and provided by the American Gelbvieh Association. EPDs are subject to change before the transfer of registration and/or the buyers receipt of the transferred registration papers due to updated data recorded at the AGA.

Trucking

Please contact Ginger Ertel or MMS to discuss trucking needs.

Ertel Cattle Co Semen Interest

Ertel cattle Company will retain 50% semen interest in all bulls selling.

This sale will be broadcast live on the internet.

DVAuction
Broadcasting Real-Time Auctions

MMS

Mitchell Marketing Services

20180 NE Roy Golden Rd - Blountstown, FL 32424

Chris Mitchell
334-695-1371
mchrismitchell@aol.com
www.mms.bz



Ginger Ertel 660-234-5265
26694 Anchor Way Greentop, MO 63546
gertel@ertelcattle.com www.ertelcattle.com

Ertel Cattle Co Bull Sale Genetic Trait Information

Color and Polled Traits

Polled Status of Sale Bulls

84% - Homozygous Polled
8% - Heterozygous Polled
8% - Homo Polled Test Pending

Color Status of Sale Bulls

74% - Homozygous Black
18% - Heterozygous Black
6% - Homo Black Test Pending

Cumulative Percent of Bulls in EPD Rank

EPD % Rank	CE	BW	WW	YW	MB
1% - 15%	24%	29%	47%	45%	43%
16% - 25%	39%	35%	53%	57%	53%
26% - 50%	63%	61%	73%	80%	80%

Bulls and Registered Females

100% are sired by AI Sires
100% of reg females sired by AI Sires

Sire and Dam Verification

100% are sire verified
92% are dam verified

Genomic Enhanced EPDs -

The major benefits of GE EPDs are: risk reduction through improved accuracies, value of time to assess breeding stock at a younger age, increased rate of genetic progress, and getting data on economically important traits which are expensive or difficult to measure. All bulls have DNA submitted for GE EPDs. The bulls with GE EPDs in the sale book are denoted with the GGP logo in the pedigree of the respective bull. All other bulls have GE EPDs pending and will be available on the supplement sheet sale day.

Sale Book EPD Explanations

Calving ease direct (CED): Percent of unassisted births of a bull's calves when he is used on heifers. A higher number is favorable, meaning better calving ease. This EPD can be vital to a rancher looking to decrease the amount of calves pulled in his herd.

Birth weight (BW): Predicts the difference, in pounds, for birth weight of the calf. **Weaning weight (WW):** Predicts the difference, in pounds, for weaning weight (adjusted to age of dam and a standard 205 days of age). This is an indicator of growth from birth to weaning.

Yearling weight (YW): Predicts the expected difference, in pounds, for yearling weight (adjusted to a standard 365 days of age). This is an indicator of growth from birth to yearling.

Milk (Milk): The genetic ability of a sire's daughters to produce milk expressed in pounds of weaning weight.

Total maternal (TM): An index that combines growth and milk information as a prediction of the weaning weight performance of calves from a sire's daughters. As an index, this value is not reported with an accompanying accuracy. A greater TM value means a mother that returns comparatively higher weaning weights on her calves. $TM\ Index = MK\ EPD + 1/2\ WW\ EPD$.

Stayability (ST): Predicts the genetic difference, in terms of percent probability, that a bull's daughters will stay productive within a herd to at least six year of age. The stayability EPD is one of the best measures currently available to compare a bull's ability to produce females with reproductive longevity.

Docility (DOC): Is reported as a percentage, with higher numbers indicating a higher percent of offspring receiving a disposition score of 1 (docile).

Calving ease maternal (CEM): Represented as percent of unassisted births in a sire's first-calving daughters. A higher number represents more favorable calving ease. This EPD is important to a rancher's bottom line because it predicts which animals produce daughters with a genetic pre-disposition to calve unassisted as heifers.

Yield grade (YG): Differences in yield grade score, which is a predictor of percent retail product. Smaller values suggest that progeny will have a better lean to fat ratio.

Carcass weight (CW): Differences in pounds of hot carcass weight, adjusted to an industry standard age endpoint.

Ribeye area (REA): Differences in ribeye area in inches between the 12th and 13th rib. Greater ribeye areas are preferable.

Marbling (MB): Predicts the differences in the degree of marbling within the ribeye as expressed in marbling score units. Greater marbling numbers are preferable and are an indicator of higher carcass quality grades.

Feeder profit index (FPI): An economic selection index designed to aid producers in selecting sires whose progeny will perform in the feedlot and are sold on grade and yield. Well ranking sires for FPI have higher marbling and carcass weight than their contemporaries. As a terminal index, little emphasis is put on maternal traits such as stayability and calving ease.

\$Cow: Represents the genetic value in dollars of profit of an animal when retained as a replacement female relative to other animals in the herd. A higher number represents more profitable genetics for maternal productivity. \$Cow will serve producers in selecting bulls that will sire daughters with stayability and reproductive efficiency as well as other traits that lead to profitability in a production system, such as milk, calving ease, moderate mature weight and the ability of calves to gain. A female's genetics also influence the performance of her calves in the feedlot and at slaughter, so traits such as feed efficiency and carcass value are also included in \$Cow.

Efficiency profit index (EPI): An economic selection index developed to aid producers in selecting for more feed efficient cattle that still have acceptable amounts of gain. The EPI provides slight negative pressure on intake, while keeping gain at a constant value. By selecting on this index, producers will be able to find those animals that gain the same amount as their contemporaries while eating less.



ERTL 238K Mr Exponential Storm 804 Sells as lot 1

Lot 1, ERTL 238K Mr Exponential Storm 804

238K is the true combination bull we strive to produce for both the seedstock and commercial cattlemen. We chose to use Exponential in our program to produce complete bulls and females that would take us to the next level in production. 238K is a bull we feel fits the mold for calving ease, performance, maternal, carcass and feeder profit. His dam is a super cow that has produced 3 calves with a weaning ratio of 109 and a yearling ratio of 106. Lot 1 posted a weaning ratio of 111 and yearling ratio of 107. His dam, ERTL 804F is a Dam of Merit. He is a homozygous polled herd sire prospect that ranks very high in EPD strength and quality. He also qualifies for the Show-Me-Select program in the state of Missouri.

ERTL 238K MR EXPONENTIAL STORM 804

1 40%GV 59%AN Balancer Bull Heterozygous Black Homozygous Polled
 BD: 3/5/2022 ERTL 238K AMG1534416
 BW: 81 WW: 723 YW: 1277

CASINO BOMBER N33
 K C F BENNETT EXPONENTIAL
 K C F MISS SOUTHSIDE
 RWL 122Y
 ERTL 804F LINCOLN 4145
 CCRO CAROLINA 4145B

⚡GGP EPD % Rank
 \$Cow
 FPI 100 1
 EPI

Show-Me-Select Qualified

CE	BW	WW	YW	M	TM	CEM	ST	DOC	YG	CW	RE	MB
14	-0.9	90	142	21	66	6	12	13	-0.05	70	0.92	0.62
35	40	2	3	45	5	65	85	25	55	1	2	10

ERTL 244K MR EXPONENTIAL 990

2 25%GV 75%AN Balancer Bull Homozygous Black Homozygous Polled
 BD: 3/2/2022 ERTL 244K AMG1534198
 BW: 92 WW: 648 YW: 1198

CASINO BOMBER N33
 K C F BENNETT EXPONENTIAL
 K C F MISS SOUTHSIDE
 DBRG MR TWISTER 7195E ET
 ERTL 990G TWISTER NEW DAY 48
 BAF NEW DAY 2057

⚡GGP EPD % Rank
 \$Cow
 FPI 94.29 4
 EPI

CE	BW	WW	YW	M	TM	CEM	ST	DOC	YG	CW	RE	MB
12	0.4	87	143	21	64	6	13	12	0.02	67	0.58	0.55
60	70	4	3	45	10	65	70	50	80	1	30	15

- Performance bull with excellent thickness and depth of body
- Top 1% Carcass Weight, 3% YW, 4% WW and 15% Marbling
- A Twister dam with outstanding maternal values

ERTL 258K MR EXPONENTIAL WOLF 6X

3 25%GV 75%AN Balancer Bull Homozygous Black Homozygous Polled
 BD: 2/27/2022 ERTL 258K AMG1534103
 BW: 85 WW: 517 YW: 998

CASINO BOMBER N33
 K C F BENNETT EXPONENTIAL
 B226 K C F MISS SOUTHSIDE
 MYTTY IN FOCUS
 MBCC JOYCE 6X
 MBCC MBCC COLLEGE FUND 6J

⚡GGP EPD % Rank
 \$Cow
 FPI 94.11 4
 EPI

Show-Me-Select Qualified

CE	BW	WW	YW	M	TM	CEM	ST	DOC	YG	CW	RE	MB
14	-0.3	84	131	16	58	8	16	16	0.09	55	0.54	0.62
35	55	10	10	85	35	30	30	2	95	4	40	10

- Heifer bull that qualifies for Show-Me-Select
- Top 10% for performance and 10% marbling
- Dam is Joyce 6X donor in our program that is a 3 time Dam of Merit and 3 time Dam of Distinction

Ertel Cattle Co Spring Balancer Bulls



ERTL 218K Sells as lot 4

Lot 4, ERTL 218K

This bull has been a true standout in this group of bulls. His dam is a high volume cow with a nursing ratio of 101 and yearling ratio of 100 for her calves produced. Low birth bull with a yearling weight of 1213 and a YW ratio of 102. He is a high volume bull with excellent thickness and eye appeal. Top 35% for low birth and strong maternal values with a strong cow family. The Franchise cattle are great producers and excellent females in production. If you look to retain females and add pounds to your calves, we recommend lot 4. His dam, ERTL 726E is a 2 time Dam of Merit.

ERTL 218K MR TANKER

4 50%GV 38%AN 12%SM Balancer Bull Homozygous Black Homozygous Polled
 BD: 3/1/2022 ERTL 218K AMG1534197
 BW: 78 WW: 639 YW: 1213

WWG C28
 MJBC FRANCHISE F806
 ABCS 026C
 PANTHER CR BLACK LOCH 5135
 ERTL 726E LOCH BILLIE
 ERTL MISS BILLIE C526



	EPD	% Rank
\$Cow		
FPI	84.07	35
EPI		

EPD/EPD Rank	CE	BW	WW	YW	M	TM	CEM	ST	DOC	YG	CW	RE	MB
	11	-1.2	75	118	27	64	7	12	13	-0.08	41	0.57	0.35
	75	35	30	30	4	10	45	85	25	40	30	35	55

ERTL 246K MR TUXEDO 821

5 55%GV 45%AN Balancer Bull Homozygous Black Homozygous Polled
 BD: 2/27/2022 ERTL 246K AMG1534112
 BW: 73 WW: 659 YW: 1238

CCRO CAROLINA LEVERAGE 3214A
 CCRO CAROLINA TUXEDO 6028D ET
 DLW MS MATRON 802U
 JKGf DITKA C85
 ERTL 821F DITKA COMPLEMENT
 ERTL MISS PEGGY C521



	EPD	% Rank
\$Cow	112.95	30
FPI	88.07	15
EPI	148.82	15

EPD/EPD Rank	CE	BW	WW	YW	M	TM	CEM	ST	DOC	YG	CW	RE	MB
	11	-1.8	78	123	25	64	8	15	10	0.04	40	0.58	0.43
	75	25	20	20	10	10	30	40	90	85	30	30	35

Lot 5, ERTL 246K

Low birth bull with excellent growth to yearling weight.
 Top 20% growth traits with top 25% birth, top 35% carcass traits and \$Cow and top 15% FPI index and EPI index.
 He puts it all in a very complete package that should be appealing to most cattlemen. His dam is a Ditka daughter we retained that is excellent in production.



ERTL 246K Sells as lot 5

Ertel Cattle Co Spring Balancer Bulls



ERTL 269K Mr Saguaro 026 Sells as lot 6



ERTL 222K Mr Saguaro 905 Sells as lot 7

ERTL 269K MR SAGUARO 026
 48%GV 52%AN Balancer Bull Homozygous Black Homozygous Polled
 BD: 2/26/2022 ERTL 269K AMG1536786
 BW: 67 WW: 814 YW: 1270

TMMW DESTINATION 82Y
 BTBR BTBR SAGUARO 8111F ET
 JEB BCC MISS OBJECTIVE 41W
 JKG F FORTUNE TEN D162 ET
 ERTL 026H MISS FX JUSTINE BY B467
 ERTL B467 EFC FUDGE

GGP EPD % Rank
 \$Cow 90.69 80
 FPI 89.95 10
 EPI 152.13 15

Show-Me-Select Qualified

CE	BW	WW	YW	M	TM	CEM	ST	DOC	YG	CW	RE	MB
18	-3.6	65	112	19	52	13	13	12	0.07	33	0.32	0.66
4	10	75	45	65	75	1	70	50	95	60	85	4

- Heifer bull with strong performance, carcass and feeder profit.
- * Dam was a first calf cow that weaned this bull at 814 lbs.
- Show-Me-Select qualified heifer bull

ERTL 222K MR SAGUARO 905
 56%GV 41%AN Balancer Bull Homozygous Black Homozygous Polled
 BD: 2/27/2022 ERTL 222K AMG1534104
 BW: 60 WW: 495 YW: 1005

TMMW DESTINATION 82Y
 BTBR BTBR SAGUARO 8111F ET
 JEB BCC MISS OBJECTIVE 41W
 JKG CIVIL WAR E92
 ERTL 905G CW BY 514C
 ERTL MISS LORI C514

GGP EPD % Rank
 \$Cow 125.54 10
 FPI 93.12 5
 EPI 154.92 15

Show-Me-Select Qualified

CE	BW	WW	YW	M	TM	CEM	ST	DOC	YG	CW	RE	MB
19	-5.2	65	108	13	45	13	18	13	0.06	27	0.4	0.73
2	2	75	55	>95	95	1	10	25	90	80	70	2

- True heifer bull that had a birth ratio of 79
- Show-Me-Select qualified bull
- Top 2% CW, BW & Marbling, top 5% FPI, 10% \$Cow and 15% EPI.

ERTL 15K MR SAGUARO
 38%GV 19%AN 43%AR Balancer Bull Heterozygous Black Heterozygous Polled
 BD: 3/12/2022 WEIM 15K AMG1542047
 BW: 94 WW: 677 YW: 1142

TMMW DESTINATION 82Y
 BTBR BTBR SAGUARO 8111F ET
 JEB BCC MISS OBJECTIVE 41W
 HXC CONQUEST 4405P
 WEIM 48F ROSE
 KEK KENYON MS. CRAFTSMAN

GGP EPD % Rank
 \$Cow 90.05 80
 FPI 85.39 30
 EPI 136.85 25

CE	BW	WW	YW	M	TM	CEM	ST	DOC	YG	CW	RE	MB
13	-1.4	73	115	23	59	9	13	10	0.12	34	0.35	0.48
45	30	40	35	25	30	15	70	90	>95	55	80	25

- 104 weaning ratio and 104 yearling ratio
- Dam has weaned 2 calves for a nursing ratio of 101 and a yearling ratio of 104
- Sired by popular calving ease high carcass bull, BTBR Saguaro

Ertel Cattle Co Spring Balancer Bulls



ERTL 217K Mr Mack Sells as lot 9

ERTL 217K MR MACK

68%GV 31%AN Balancer Bull Heterozygous Black Homozygous Polled
 BD: 3/4/2022 ERTL 217K AMGV1534415
 BW: 72 WW: 649 YW: 1244

V A R DISCOVERY 2240
 JKGF CIVIL WAR E92
 JKGF LOTTIE C92
 VRT LAZY TV SAM U451
 ERTL 719E SAM 4145
 CCRO CAROLINA 4145B

EPD/EPD Rank

CE	BW	WW	YW	M	TM	CEM	ST	DOC	YG	CW	RE	MB
17	-1.1	75	122	20	57	10	19	15	-0.16	34	0.64	0.31
15	35	30	20	55	45	10	4	5	15	55	20	65

⚡GPP Show-Me-Select Qualified

	EPD	% Rank
\$Cow	136.17	4
FPI	84.61	30
EPI	119.26	40

- Heifer bull that is high volume and Show-Me-Select qualified
- * Weaning ratio of 100 and yearling ratio of 105
- Dam has weaned 4 with a nursing ratio of 103 and a yearling ratio of 103 and is a Dam of Merit

ERTL 209K MR CW ERNIE

56%GV 38%AN Balancer Bull Homozygous Black Homozygous Polled
 BD: 2/26/2022 ERTL 209K AMGV1533928
 BW: 80 WW: 773 YW: 1409

V A R DISCOVERY 2240
 JKGF CIVIL WAR E92
 JKGF LOTTIE C92
 CCRO CCROSS CAROLINA 3229A
 ERTL 22E2
 MBCC EMILIE 22P2

EPD/EPD Rank

CE	BW	WW	YW	M	TM	CEM	ST	DOC	YG	CW	RE	MB
14	1.3	87	150	22	65	10	16	16	-0.2	53	0.85	0.42
35	90	4	1	35	10	10	30	2	5	5	3	35

⚡GPP Show-Me-Select Qualified

	EPD	% Rank
\$Cow	115.43	25
FPI	91.75	10
EPI	159.12	10

- Show-Me-Select qualified
- Weaning ratio of 107 and yearling ratio of 108
- Dam has a nursing ratio of 105 and a yearling ratio of 103 on 4 calves she has produced. Emilie 22P2 cow family, she is a 2 time Dam of Merit from Midwest Beef Cattle Consultants program
- 1409 yearling weight

ERTL 201K MR CW EDISON 26

50%GV 50%AN Balancer Bull Homozygous Black Homozygous Polled
 BD: 3/22/2022 ERTL 201K AMGV1536595
 BW: 89 WW: 776 YW: 1261

V A R DISCOVERY 2240
 JKGF CIVIL WAR E92
 JKGF LOTTIE C92
 DLW DLW EDISON 6718X
 TMGC SB MS EDISON 26C
 TMGC SB PEARL 58A

EPD/EPD Rank

CE	BW	WW	YW	M	TM	CEM	ST	DOC	YG	CW	RE	MB
13	-0.5	86	135	20	63	8	8	13	-0.11	48	0.62	0.57
45	50	5	10	55	15	30	>95	25	30	15	25	10

⚡GPP Show-Me-Select Qualified

	EPD	% Rank
\$Cow	74.55	95
FPI	95.58	3
EPI	175.25	5

- Weaning ratio of 119 and yearling ratio of 106
- Dam has weaned 6 with a nursing ratio of 107 and yearling ratio of 102 and is a 4 time Dam of Merit
- Civil War is a strong producer of low birth, performance, carcass and eye appeal. Retain his daughters

ERTL 259K MR CW 4145

62%GV 38%AN Balancer Bull Homozygous Black Homozygous Polled
 BD: 4/14/2022 ERTL 259K AMGV1538508
 BW: 82 WW: 729 YW: 1286

V A R DISCOVERY 2240
 JKGF CIVIL WAR E92
 JKGF LOTTIE C92
 JCGR BAR GT COLTON 292X
 CCRO CAROLINA 4145B
 FHG CAROLINA MS DUKE 5120R

EPD/EPD Rank

CE	BW	WW	YW	M	TM	CEM	ST	DOC	YG	CW	RE	MB
10	2.1	85	131	17	59	6	14	12	-0.14	45	0.72	0.37
85	95	10	10	80	30	65	55	50	20	20	10	45

⚡GPP Show-Me-Select Qualified

	EPD	% Rank
\$Cow	101.6	55
FPI	85.48	25
EPI	128.28	35

- Bull to be used on cows with excellent performance and carcass
- Top 10% growth traits, 20% CW & RE, top 25% FPI

Ertel Cattle Co Spring Balancer Bulls



ERTL 223K MR CW 4144

13 65%GV 34%AN Balancer Bull Homozygous Black Homozygous Polled
 BD: 3/28/2022 ERTL 223K AMGV1536787
 BW: 86 WW: 691 YW: 1279

2240 V A R DISCOVERY 2240

JKGF CIVIL WAR E92

JKGF LOTTIE C92

JCGR BAR GT COLTON 292X

CCRO CAROLINA 4144B

EPD/EPD Rank CCRO CCROSS FORTUNE GIRL 8333



	EPD	% Rank
\$Cow	124.42	10
FPI	87.98	20
EPI	134	30

CE	BW	WW	YW	M	TM	CEM	ST	DOC	YG	CW	RE	MB
12	1.9	86	136	23	66	6	18	12	-0.11	36	0.67	0.38
60	95	5	5	25	5	65	10	50	30	45	15	45

- Performance bull that ranks in top 5% for performance EPDs
- Weaning ratio of 106 and yearling ratio of 108
- Dam has a nursing ratio of 107 and yearling ratio of 107 on 6 calves produced
- Civil War son, will produce great performance and super females



ERTL 223K Mr CW 4144 Sells as lot 13



ERTL 225K MR CW DARK WARRIOR

14 50%GV 50%AN Balancer Bull Homozygous Black Homozygous Polled
 BD: 3/19/2022 ERTL 225K AMGV1536435
 BW: 83 WW: 753 YW: 1337

V A R DISCOVERY 2240

JKGF CIVIL WAR E92

JKGF LOTTIE C92

VRT LAZY TV SAM U451

DLW MS SAM ET

EPD/EPD Rank THOMAS LADY JET 6959



	EPD	% Rank
\$Cow	109.22	40
FPI	88.94	15
EPI	152.97	15

CE	BW	WW	YW	M	TM	CEM	ST	DOC	YG	CW	RE	MB
10	1.4	88	134	23	67	6	14	12	-0.21	59	0.96	0.37
85	90	3	10	25	3	65	55	50	4	2	1	45

- Performance bull with 3% WW and 10% YW.
- Weaning ratio of 116 and yearling ratio of 112.
- Dam has nursing ratio of 105 on 9 calves. She was our pick in from Warner Beef Genetics as a bred heifer. She has raised 9 calves and is a 9 year old cow.
- * Top 1% RE, 2% CW, 3% TM and 15% FPI and EPI



JKGF Civil War E92 Sire of lots 9-14



ERTL 208K MR TWISTED SAM 6K6 ET

15 75%GV 25%AN Balancer Bull Homozygous Black Heterozygous Polled
 BD: 3/3/2022 ERTL 208K AMGV1534856
 BW: 68 WW: 578 YW: 1038

DBRG TWISTER 451B

DBRG MR TWISTER 7195E ET

BTBR MS BLACK CROSS 6044

VRT LAZY TV SAM U451

DLW MS SAM ET

EPD/EPD Rank THOMAS LADY JET 6959



Show-Me-Select
Qualified

	EPD	% Rank
\$Cow	117.38	20
FPI	82.58	40
EPI	76.24	85

CE	BW	WW	YW	M	TM	CEM	ST	DOC	YG	CW	RE	MB
15	-3.8	62	93	26	57	8	16	12	-0.2	24	0.55	0.43
25	5	85	85	10	45	30	30	50	5	90	40	35

- Heifer bull that ranks in top 5% for low BW and 25% CE
- Dam is a strong donor in our program and maternal values are great in this bull
- Show-Me-Select qualified bull



DBRG Mr Twister 7195E ET Sire of lots 15-16



ERTL 221K MR TWISTER 808

16 75%GV 25%AN Balancer Bull Homozygous Black Homozygous Polled
 BD: 3/21/2022 ERTL 221K AMGV1536439
 BW: 77 WW: 570 YW: 1085

DBRG TWISTER 451B

DBRG MR TWISTER 7195E ET

BTBR MS BLACK CROSS 6044

K C F BENNETT ABSOLUTE

ERTL 808F ABSOLUTE RUBY

EPD/EPD Rank CCRO CAROLINA RUBY 4308B



Show-Me-Select
Qualified

	EPD	% Rank
\$Cow		
FPI	78.39	65
EPI		

CE	BW	WW	YW	M	TM	CEM	ST	DOC	YG	CW	RE	MB
15	-2.2	66	99	18	51	7	14	12	-0.27	13	0.67	0.26
25	20	70	75	75	80	45	55	50	1	>95	15	75

- Heifer bull in the top 20% BW and 25% CE.
- High percentage Balancer Bull sired by Twister 7195E
- * Show-Me-Select qualified



ERTL 221 Mr Twister 808 Sells as lot 16

Ertel Cattle Co Spring Balancer Bulls



ERTL 261K Mr Kenmore Sells as lot 17



ERTL H21 Mr Texplay f21 Sire of lots 18-19

ERTL 261K MR KENMORE
 17 25%GV 75%AN Balancer Bull Homozygous Black Homozygous Polled
 BD: 2/26/2022 ERTL 261K AMG1533922
 BW: 71 WW: 886 YW: 1359

BASIN PAYWEIGHT 1682
 TEX PLAYBOOK 5437
 RITA 1C43 OF 9M26 COMPLETE
 JKGF CIVIL WAR E92
 ERTL 073H CW 6F1
 ERTL 6F1 ET JOYCYLN DITKA

EPD/EPD Rank

CE	BW	WW	YW	M	TM	CEM	ST	DOC	YG	CW	RE	MB
16	-1.1	84	135	22	64	12	23	15	0.09	53	0.47	0.54
15	35	10	10	35	10	2	1	5	95	5	55	15

- Big time bull sired by TEX Playbook
- Calving ease, performance, carcass and feedlot profits in a very impressive bull
- Dam is a first calf Civil War daughter that weaned this first calf with a 106 ratio and a 105 yearling ratio
- Show-Me-Select qualified with a weaning of 886 lbs and 1359 yearling weight

ERTL 263K MR TEXPLAY 119 BY 808
 18 58%GV 41%AN Balancer Bull Homozygous Black Homozygous Polled
 BD: 3/21/2022 ERTL 263K AMG1536434
 BW: 78 WW: 739 YW: 1304

TEX PLAYBOOK 5437
 ERTL H21 MR TEXPLAY F21
 ERTL F21 GRACYLN DITKA
 DBRG MR TWISTER 7195E ET
 ERTL 119H ET 4308 TWISTER
 CCRO CAROLINA RUBY 4308B

EPD/EPD Rank

CE	BW	WW	YW	M	TM	CEM	ST	DOC	YG	CW	RE	MB
14	-0.4	89	136	24	68	9	18	14	0.01	36	0.45	0.32
35	55	3	5	20	3	15	10	15	80	45	60	60

- Sired by a son of TEX Playbook we retained in our program. His sons selling are outstanding
- 113 weaning ratio and 110 yearling ratio out of a first calf cow
- Top 3% WW & TM, 5% YW and top 10% FPI
- Show-Me-Select qualified with a WW of 739 and a YW of 1304



ERTL 265K Mr Texplay River 997 Sells as lot 19

ERTL 265K MR TEXPLAY RIVER 997
 19 27%GV 72%AN Balancer Bull Homozygous Black Homozygous Polled
 BD: 3/20/2022 ERTL 265K AMG1536438
 BW: 77 WW: 810 YW: 1319

TEX PLAYBOOK 5437
 ERTL H21 MR TEXPLAY F21
 ERTL F21 GRACYLN DITKA
 TEX PLAYBOOK 5437
 ERTL 997H TEX LINCOLN EXCLUSIVE
 ERTL 802F LINCOLN EXCLUSIVE

EPD/EPD Rank

CE	BW	WW	YW	M	TM	CEM	ST	DOC	YG	CW	RE	MB
13	-0.5	78	120	23	62	9	15	14	-0.03	35	0.36	0.5
45	50	20	25	25	15	15	40	15	65	50	80	20

- Sired by a son of TEX Playbook we retained in our program. His sons selling are outstanding
- Son of a first calf cow that weaned at 810 and posted a yearling weight of 1319
- Top 20% WW and MB, Top 25% YW and Milk.
- Outstanding bull with volume, thickness and combined traits for performance, maternal and carcass

Ertel Cattle Co Spring Balancer Bulls

Lot 20, ERTL 270K

A Show-Me-Select qualified bull that weaned at over 700 lbs out of a first calf cow. A very strong maternal cow family of DLW Ms Matron 802U that is among the top production females in the breed. 270K is a very attractive bull with great depth and thickness in a true calving ease package.



ERTL 270K Mr Lifeline Alumni Mork Sells as lot 20

ERTL 270K MR LIFELINE ALUMNI MORK
20 49%GV 51%AN Balancer Bull Homozygous Black Homozygous Polled
 BD: 3/1/2022 ERTL 270K AMG1534114
 BW: 84 WW: 703 YW: 1107

S A V FINAL ANSWER 0035
 EGL EGL LIFELINE B101
 EGL ESTELLE X014
 KCF BENNETT Y6
 CCRO CAROLINA 1915G ET
 DLW MS MATRON 802U

GGP Show-Me-Select Qualified

	EPD	% Rank
\$Cow	91.53	80
FPI	79.47	60
EPI	148.9	15

EPD/EPD Rank	CE	BW	WW	YW	M	TM	CEM	ST	DOC	YG	CW	RE	MB
	15	-2.7	72	111	16	52	7	13	10	-0.13	25	0.52	0.15
	25	15	45	45	85	75	45	70	90	25	85	45	95

ERTL 2K1 MR BARON DENALI
21 25%GV 50%AN 6%SM Bull Double Black Double Polled
 BD: 3/10/2022 ERTL 2K1 AMG1540585
 BW: 0 WW: 715 YW: 1151

MUSGRAVE AVIATOR
 JKGF BLACK BARON D126 ET
 KCF MISS FORTUNE U490

GGP Show-Me-Select Qualified

	EPD	% Rank
\$Cow		
FPI	74.93	70
EPI		

EPD/EPD Rank	CE	BW	WW	YW	M	TM	CEM	ST	DOC	YG	CW	RE	MB
	14	-2.3	58	95	21	49	10	8	8	0.03	22	0.21	0.35
	30	15	90	75	45	85	5	>95	>95	90	90	>95	40



ERTL 2K1 Mr Baron Denali Sells as lot 21

Lot 21, ERTL 2K1

Show-Me-Select qualified bull out of our resident AI sire, Black Baron. His females are super in production with excellent volume and mass. He weaned over 700 lbs and ranks in top 15% for low BW and top 30% for CE.



JKGF Black Baron D126 ET Sire of lot 21

Ertel Cattle Co Spring Balancer Bulls



ERTL 211K Mr Chip 907 Sells as lot 22



ERTL 205K Mr Chip 745 Sells as lot 23

ERTL 211K MR CHIP 907
 47%GV 53%AN Balancer Bull Homozygous Black Homozygous Polled
 BD: 2/24/2022 ERTL 211K AMG1533811
 BW: 72 WW: 688 YW: 1330

CCRO CAROLINA LEVERAGE 3214A
 ERTL BARGAINING CHIP D677
 KCS BLACKBIRD 7707
 DBRG MR TWISTER 7195E ET
 ERTL 907G TWISTER EARLINE
 SANDPOINT ERALINE 1231

XXGGP EPD % Rank
 \$Cow 118.44 20
 FPI 87.47 20
 EPI 155.03 15

Show-Me-Select Qualified

CE	BW	WW	YW	M	TM	CEM	ST	DOC	YG	CW	RE	MB
14	0	81	129	27	67	9	17	14	-0.1	40	0.58	0.34
35	65	15	10	4	3	15	15	15	35	30	30	55

- Son of ERTL Bargaining Chip, a bull we sold through Seedstock Plus that is being used AI throughout the breed. Bargaining Chip was the number 1 bull on feed efficiency test for Seedstock Plus in 2017.
- Dam is a first calf cow that weaned this bull with a 106 nursing ratio and a 112 yearling ratio
- Adjusted yearling weight of 1330

ERTL 205K MR CHIP 745
 34%GV 66%AN Balancer Bull Homozygous Black Homozygous Polled
 BD: 2/23/2022 ERTL 205K AMG1533630
 BW: 80 WW: 740 YW: 1351

CCRO CAROLINA LEVERAGE 3214A
 ERTL BARGAINING CHIP D677
 KCS BLACKBIRD 7707
 TMGC SB ARNOLD 225W
 ERTL 745E ARNOLD DANNY GIRL
 BAF DANNY BOY 3063

XXGGP EPD % Rank
 \$Cow 113.64 30
 FPI 97.95 2
 EPI 173.99 5

Show-Me-Select Qualified

CE	BW	WW	YW	M	TM	CEM	ST	DOC	YG	CW	RE	MB
12	0.9	92	137	25	71	6	16	10	0.03	50	0.61	0.63
60	80	2	5	10	1	65	30	90	85	10	25	5

- Performance bull with a 740 WW and 1351 YW
- Weaning ratio of 114 and yearling ratio of 114
- Top 2% WW and FPI, 5% YW, Marbling and EPI and 10% Milk and CW
- Maternal grandam is Danny Boy 3063, foundation Angus female in our herd

ERTL 239K MR CHIP 967
 47%GV 53%AN Balancer Bull Homozygous Black Homozygous Polled
 BD: 2/24/2022 ERTL 239K AMG1533812
 BW: 70 WW: 702 YW: 1264

CCRO CAROLINA LEVERAGE 3214A
 ERTL BARGAINING CHIP D677
 KCS BLACKBIRD 7707
 DBRG MR NEVADA 532C
 ERTL 967G NEVADA LINCOLN
 ERTL 767E LINCOLN B467

XXGGP EPD % Rank
 \$Cow 135.12 4
 FPI 102.3 1
 EPI 154.01 15

Show-Me-Select Qualified

CE	BW	WW	YW	M	TM	CEM	ST	DOC	YG	CW	RE	MB
15	-0.2	90	133	28	72	9	19	13	0.02	35	0.36	0.75
25	60	2	10	3	1	15	4	25	80	50	80	2

- Son of ERTL Bargaining Chip, a bull we sold through Seedstock Plus that is being used AI throughout the breed. Bargaining Chip was the number 1 bull on feed efficiency test for Seedstock Plus in 2017.
- Weaning ratio 108 and yearling ratio 108
- Strong combination of calving ease, performance and carcass.

Ertel Cattle Co Spring Balancer Bulls

ERTEL 3K MR TAHOE

25 25%GV 75%AN Balancer Bull Homozygous Black Homozygous Polled
 BD: 2/28/2022 WEIM 3K AMG1542036
 BW: 83 WW: 730 YW: 1305

TEHAMA UPWARD Y238
 TEHAMA TAHOE B767
 TEHAMA MARY BLACKBIRD Y684
 TMGC SB ARNOLD 225W

WEIM 15G
 EPD/EPD Rank ERTL D605

CE	BW	WW	YW	M	TM	CEM	ST	DOC	YG	CW	RE	MB
17	-1.6	95	154	22	70	9	20	13	-0.03	44	0.6	0.45
10	30	1	1	35	1	15	2	25	65	20	30	30

- Son of the popular Angus Sire Tahema Tahoe B767
- Weaning ratio 112 and yearling ratio 119
- Top 1% of the breed for performance, FPI and EPI, top 10% CE and 30% Marbling
- Show-Me-Select qualified with a WW of 730 and YW of 1305



ERTL 3K Mr Tahoe Sells as lot 25

ERTEL 5K MR TAHOE

26 25%GV 75%AN Balancer Bull Homozygous Black (WT) Homozygous Polled
 BD: 3/3/2022 WEIM 5K AMG1542038
 BW: 70 WW: 685 YW: 1131

TEHAMA UPWARD Y238
 TEHAMA TAHOE B767
 TEHAMA MARY BLACKBIRD Y685
 JKGF DITKA C85

MBCC AMANDA 4E
 EPD/EPD Rank MBCC EVIE 1B ET

CE	BW	WW	YW	M	TM	CEM	ST	DOC	YG	CW	RE	MB
20	-4.9	77	124	22	60	11	21	14	0.09	52	0.49	0.49
1	2	25	20	35	25	3	1	15	95	10	50	20

- Son of the popular Angus Sire Tahema Tahoe B767
- Heifer bull that ranks in top 1% CE and 2% low BW
- Strong bull that combines calving ease, performance, carcass, maternal and feedlot



ERTL 5K Mr Tahoe Sells as lot 26

ERTEL 8K MR TAHOE

27 13%GV 50%AN 27%AR Bull Heterozygous Black Heterozygous Polled
 BD: 3/7/2022 WEIM 8K AMG1542041
 BW: 70 WW: 550 YW: 1007

TEHAMA UPWARD Y238
 TEHAMA TAHOE B767
 TEHAMA MARY BLACKBIRD Y687
 5L CRAFTSMAN 1134-150X

KEK KENYON MS. CRAFTSMAN
 EPD/EPD Rank RAZ RED BALANCE 12Y

CE	BW	WW	YW	M	TM	CEM	ST	DOC	YG	CW	RE	MB
18	-5.4	55	90	25	53	9	22	10	0.13	28	0.27	0.47
4	1	95	85	15	65	15	1	85	>95	70	95	20

- Son of the popular Angus Sire Tahema Tahoe B767
- Heifer bull that ranks in top 1% for low BW and top 4% for calving ease.
- Strong maternal values and carcass values

ERTEL 13K MR TANKER

28 43%GV 56.3%AN Balancer Bull Homozygous Black Homozygous Polled
 BD: 3/8/2022 WEIM 13K AMG1542045
 BW: 72 WW: 612 YW: 1073

TEHAMA UPWARD Y238
 TEHAMA TAHOE B767
 TEHAMA MARY BLACKBIRD Y684
 CCRO CCROSS CAROLINA 3229A

MBCC JEANNETTE 11E
 EPD/EPD Rank LDJ GLP MS 334/ANCHOR 412P

CE	BW	WW	YW	M	TM	CEM	ST	DOC	YG	CW	RE	MB
16	-1.1	84	127	22	64	8	19	11	0.05	50	0.45	0.61
15	35	10	15	35	10	30	4	75	90	10	60	10

- Son of the popular Angus Sire Tahema Tahoe B767
- Heifer bull that is Show-Me-Select qualified
- EPD values are superb across the board with calving ease, performance, carcass and FPI

SUGGESTED USE FOR GELBIEH and BALANCER® EPDs

TRAIT:	EPD WEIGHT RANGES:	EPD WEIGHT RANGES:	EPD WEIGHT RANGES:
Calving Ease EPD	Balancer® 14 and up	Balancer® 9-13	Balancer® 8 and below
	Purebred 14 and up	Purebred 9-13	Purebred 8 and below
Recommended for:	Heifers and small cows	Younger cows and Problem-Calving Cows	Cows
Weaning Weight EPD	Balancer® 51-60	Balancer® 61-69	Balancer® 70 and up
	Purebred 50-60	Purebred 61-67	Purebred 68 and up
Will:	Maintain weaning weight	Moderately increase WW	Greatly increase WW
Yearling Weight EPD	Balancer® 75-90	Balancer® 91-102	Balancer® 103 and up
	Purebred 69-80	Purebred 81-97	Purebred 98 and up
Will provide:	Good growth potential	Excellent growth potential	Exceptional growth potential
Milk EPD	Balancer® 7-17	Balancer® 18-22	Balancer® 23 and up
	Purebred 7-17	Purebred 18-22	Purebred 23 and up
Will provide:	Excellent milk potential	Exceptional milk potential	Superior milk potential

Ertel Cattle Co Spring Balancer Bulls



ERTL 231K Mr Carolina Leverage 962 Sells as lot 29



CCRO Carolina Leverage 3214A Sire of lots 29-32

ERTL 231K MR CAROLINA LEVERAGE 962

29 81%GV 19%AN Bull Homozygous Black Homozygous Polled
 BD: 3/1/2022 ERTL 231K AMG1534109
 BW: 68 WW: 567 YW: 1052

VRT LAZY TV SAM U451
 CCRO CAROLINA LEVERAGE 3214A
 CCRO BELLE OF THE BALL 1309Y
 DBRG MR TWISTER 7195E ET

ERTL 962G TWISTER AMANDA 24C
 MBCC MBCC 24C AMANDA

EPD/EPD Rank	CE	BW	WW	YW	M	TM	CEM	ST	DOC	YG	CW	RE	MB
	12	-1.4	71	105	22	57	9	17	9	-0.13	28	0.65	0.35
	60	30	45	50	35	40	15	20	95	45	70	30	40

⚡GPP

	\$Cow	EPD	% Rank
	125.99		15
	81.47		35
	100.07		45

- Son of Carolina Leverage that produces strong growth, maternal and carcass
- Very attractive bull that has great volume and thickness
- High percentage Gelbvieh bull out of a strong Twister dam

ERTL 257K MR LEVERAGE 998

30 78%GV 22%AN Bull Homozygous Black Double Polled
 BD: 2/25/2022 ERTL 257K AMG1533814
 BW: 65 WW: 546 YW: 1031

VRT LAZY TV SAM U451
 CCRO CAROLINA LEVERAGE 3214A
 CCRO BELLE OF THE BALL 1309Y
 JKG CIVIL WAR E92

ERTL 998G CW 719
 ERTL 719E SAM 4145

EPD/EPD Rank	CE	BW	WW	YW	M	TM	CEM	ST	DOC	YG	CW	RE	MB
	14	-2.3	70	107	20	55	9	23	13	-0.2	35	0.84	0.51
	30	15	50	45	55	55	15	1	25	25	40	10	15

⚡GPP

	\$Cow	EPD	% Rank
	165.11		1
	87.05		15
	108.77		40

Show-Me-Select Qualified

- Show-Me-Select qualified bull with top 50% performance traits
- High carcass traits that rank in the top 15% for MB & FPI and 10% RE.
- Maternal grandam is our top producing cow, ERTL 719E

ERTL 214K MR LEVERAGE BLACKBIRD 937

31 59%GV 41%AN Balancer Bull Heterozygous Black Homozygous Polled
 BD: 3/2/2022 ERTL 214K AMG1534105
 BW: 75 WW: 587 YW: 1138

VRT LAZY TV SAM U451
 CCRO CAROLINA LEVERAGE 3214A
 CCRO BELLE OF THE BALL 1309Y
 SFGC SFGC SUB ZERO 748E

ERTL 937G SZ BLACKBIRD 77
 ERTL MISS BESS C577

EPD/EPD Rank	CE	BW	WW	YW	M	TM	CEM	ST	DOC	YG	CW	RE	MB
	12	1.1	84	130	23	65	8	15	12	-0.09	49	0.74	0.44
	60	85	10	10	25	10	30	40	50	40	10	10	30

⚡GPP

	\$Cow	EPD	% Rank
	116.34		25
	88.78		15
	148.01		20

- Performance bred bull with strong maternal values, carcass values and feeder profits
- Dam is a second calf cow that has done great work in this bull.
- Top 10% WW, YW, TM, CW, RE, 10% TM, 15% FPI, 20% EPI, 25% \$Cow and 30% Marbling
- Maternal grandam is ERTL C577, maternal sister to ERTL Bargaining Chip

ERTL 256K MR CAROLINA LEVERAGE 953

32 72%GV 28%AN Balancer Bull Homozygous Black Homozygous Polled
 BD: 3/6/2022 ERTL 256K AMG1534455
 BW: 83 WW: 629 YW: 1096

VRT LAZY TV SAM U451
 CCRO CAROLINA LEVERAGE 3214A
 CCRO BELLE OF THE BALL 1309Y
 JKG FORTUNE TEN D162 ET

ERTL 953G FORTUNE 5E
 ERTL 5E CAROLINA GOOD NIGHT

EPD/EPD Rank	CE	BW	WW	YW	M	TM	CEM	ST	DOC	YG	CW	RE	MB
	11	-2.7	65	96	21	53	8	16	12	-0.13	17	0.48	0.52
	75	15	75	80	45	70	30	30	50	25	>95	55	15

⚡GPP

	\$Cow	EPD	% Rank
	119.16		20
	83.2		40
	91.85		75

- High percentage Balancer bull out of a Fortune Ten dam
- Low BW and high marbling bull

Ertel Cattle Co Spring Balancer Bulls



ERTL 228K MR DUALLY 986

33 25%GV 75%AN Balancer Bull Homozygous Black Homozygous Polled
 BD: 3/19/2022 ERTL 228K AMG1536440
 BW: 89 WW: 652 YW: 1274

DL DUALLY
 PANTHER CR DUALLY 0262
 PANTHER CR BLACKCAP 128
 JKGF CIVIL WAR E92



	EPD	% Rank
\$Cow		
FPI	100.8	1
EPI		

ERTL 986G CW SAMMY
 EPD/EPD Rank ERTL ERTL B448 PAMELA

CE	BW	WW	YW	M	TM	CEM	ST	DOC	YG	CW	RE	MB
11	0.6	94	144	19	66	8	13	14	0.1	63	0.58	0.72
75	75	1	2	65	5	30	70	15	95	1	30	2

- Weaning ratio 100 and yearling ratio of 107
- Dam has weaned 2 with a nursing ratio of 103 and yearling ratio of 108
- Top 1% WW, CW and FPI, top 2% YW and Marbling
- Panther CR Dually 0262, second high selling bull at Panther Creek in 2021 that we selected to add growth, marbling, and calving ease to program.



ERTL 228K Mr Dually 986 Sells as lot 33



ERTL 234K MR DUALLY 963

34 23%GV 77%AN Bull Homozygous Black Homozygous Polled
 BD: 4/8/2022 ERTL 234K AMG1538510
 BW: 68 WW: 741 YW: 1323

DL DUALLY
 PANTHER CR DUALLY 0262
 PANTHER CR BLACKCAP 128
 DBRG MR NEVADA 532C



Show-Me-Select
 Qualified

	EPD	% Rank
\$Cow		
FPI	102.33	1
EPI		

ERTL 963G MISS NEVADA BY 703
 EPD/EPD Rank ERTL 703E LILYAN

CE	BW	WW	YW	M	TM	CEM	ST	DOC	YG	CW	RE	MB
16	-2.2	84	136	22	65	10	12	14	0.07	53	0.47	0.78
15	15	10	4	35	10	5	85	10	95	4	70	1

- Heifer bull that posted a 741 WW and 1323 YW
- EPD profile is very strong with top 1% MB & FPI, top 4% YW & CW, top 15% BW & CE
- Show-Me-Select qualified
- Panther CR Dually 0262, second high selling bull at Panther Creek in 2021 that we selected to add growth, marbling, and calving ease to program.



Panther CR Dually 0262 Sire of lots 33-34



ERTL 236K MR MAIN 618

35 25%GV 75%AN Balancer Bull Homozygous Black Homozygous Polled
 BD: 3/2/2022 ERTL 236K AMG1534199
 BW: 83 WW: 736 YW: 1237

44 MAIN ATTRACTION 4793
 44 MAIN STREET 7049
 BASIN LUCY 3829
 DBRG MR ASTRO 485B ET



	EPD	% Rank
\$Cow		
FPI	90	10
EPI		

ERTL D618 ASTRO BLACKCAP
 EPD/EPD Rank 7711 BLACKCAP 7711

CE	BW	WW	YW	M	TM	CEM	ST	DOC	YG	CW	RE	MB
12	-1	79	122	21	60	8	11	16	0.07	44	0.38	0.54
60	40	20	20	45	25	30	90	2	95	20	75	15

- Sired by the popular 44 Main Street 7049 Angus sire
- 113 weaning ratio and 104 yearling ratio
- Great combination of performance, carcass and maternal EPDs



ERTL 236K Mr Main 618 Sells as lot 35



ERTL 237K MR NIAGRA 911

36 36%GV 64%AN Balancer Bull Homozygous Black Homozygous Polled
 BD: 2/25/2022 ERTL 237K AMG1533817
 BW: 76 WW: 578 YW: 1033

G18U HOOVER DAM
 S S NIAGARA Z29
 JET S S X144
 DBRG MR TWISTER 7195E ET



	EPD	% Rank
\$Cow		
FPI	92.6	10
EPI		

ERTL 911G TWISTER TTH SAM
 EPD/EPD Rank ERTL D611 TTH SAMMY

CE	BW	WW	YW	M	TM	CEM	ST	DOC	YG	CW	RE	MB
12	-1.1	85	149	20	62	5	10	14	-0.08	48	0.75	0.42
60	35	10	1	55	15	80	>95	15	40	15	10	35

- Performance bull that ranks in top 1% for YW and top 10% for weaning
- Sired by the popular SS Niagara Z29 out of a super Twister bred dam



44 Main Street 7049 Sire of lot 35

Ertel Cattle Co Spring Balancer Bulls



PHG Prohart Ol'Glory 901 Sire of lots 41-42

ERTL 242K MR O'GLORY 901

41 65%GV 34%AN Balancer Bull Heterozygous Black Homozygous Polled
 BD: 3/14/2022 ERTL 242K AMGV1535502
 BW: 84 WW: 751 YW: 1313

OGSG OGSG CENTURION 120C
 PHS PROHART OL' GLORY 935G
 PHS PROHART BRANDY 516C
 CCRO CAROLINA EXCLUSIVE 1230Y

GGP

	EPD	% Rank
\$Cow	112.31	30
FPI	84.48	30
EPI	96.75	70

ERTL 901G EXCLUSIVE ERICA
 PANTER CR K ERICA 149

CE	BW	WW	YW	M	TM	CEM	ST	DOC	YG	CW	RE	MB
12	1.1	80	112	20	60	6	16	14	-0.07	28	0.39	0.41
60	85	15	45	55	25	65	30	15	45	75	70	35

- Performance bull
- Sire by 2021 Breeder's Choice Bull Futurity Champion, Ol'Glory 935G
- * Excellent performance with WW of 751 and YW of 1313

ERTL 272K MR GLORY 095

42 PB 94% Gelbvieh Bull Heterozygous Black Homozygous Polled
 BD: 3/5/2022 ERTL 272K AMGV1534418
 BW: 82 WW: 814 YW: 1232

OGSG OGSG CENTURION 120C
 PHS PROHART OL' GLORY 935G
 PHS PROHART BRANDY 516C
 DBRG MR TWISTER 7195E ET

GGP

	EPD	% Rank
\$Cow	105.02	70
FPI	74.7	55
EPI	90.96	35

ERTL 095H X514C ET TWISTED RUBY
 CCRO CAROLINA RUBY 4308B

CE	BW	WW	YW	M	TM	CEM	ST	DOC	YG	CW	RE	MB
9	0.4	73	107	19	55	6	14	12	-0.17	35	0.66	0.15
90	60	30	30	75	55	55	75	45	75	30	50	70

- Performance bull
- Sire by 2021 Breeder's Choice Bull Futurity Champion, Ol'Glory 935G
- Weaned at 814 out of a first calf cow

ERTL 18K AUGGIE

43 50%GV 50%AN Balancer Bull Homozygous Black Homozygous Polled
 BD: 3/28/2022 WEIM 18K AMGV1543152
 BW: 72 WW: 621 YW: 969

DBRG WCR 59
 MBCC AUGGIE 18H
 MBCC SARAH 1C ET
 VRT LAZY TV TANK X315

GGP

	EPD	% Rank
\$Cow	114.16	25
FPI	90.58	10
EPI	105.08	60

ERTL D605
 MBCC MBCC LUCILLE 5A

CE	BW	WW	YW	M	TM	CEM	ST	DOC	YG	CW	RE	MB
23	-3.7	67	99	21	54	15	17	10	0.02	24	0.18	0.61
1	5	70	75	45	60	1	15	90	80	90	>95	10

- Heifer bull that qualifies for Show-Me-Select
- * Calving ease, carcass values and feeder profits rank very high
- Dam is a strong Ertel Cattle Co bred cow

ERTL 19K MR AUGGIE

44 50%GV 50%AN Balancer Bull Homozygous Black Double Polled
 BD: 3/29/2022 WEIM 19K AMGV1543153
 BW: 78 WW: 620 YW: 1068

DBRG WCR 59
 MBCC AUGGIE 18H
 MBCC SARAH 1C ET
 TMGC SB ARNOLD 225W

GGP

Show-Me-Select Qualified

	EPD	% Rank
\$Cow	87.5	85
FPI	88.86	15
EPI	89.09	75

MBCC 7G
 MBCC 62C JEN

CE	BW	WW	YW	M	TM	CEM	ST	DOC	YG	CW	RE	MB
21	-3.7	60	94	24	54	13	12	10	0.02	18	0.09	0.7
1	5	90	85	20	60	1	85	90	80	>95	>95	3

- Heifer bull that qualifies for Show-Me-Select
- * Calving ease, carcass values and feeder profits rank very high
- Maternal grandam is a maternal sister to our donor MBCC 6X and a full ET sister to MBCC 63Z

GELBIEH & BALANCER[®]

Smart. Reliable. Profitable.

JKGF Civil War E92

We purchased Civil War in the 2018 Genetic Power bull sale. His legacy has established strong roots in our program as well as the Gelbvieh/Balancer breeds nationwide. He was the 3rd heaviest used AI sire in 2021 as reported by the American Gelbvieh Association. His production at Ertel Cattle Company has allowed us to establish as strong cow herd base with his offspring being received as our top bulls and females by our customers for the past 3 years. His sons and daughters selling in our production sale this year are among the best we have to offer. His progeny offer many genetic strengths to fit all industry needs to add value to his offspring in most every aspect.



JKGF Civil War E92 Sire of lots 50-53

Ertel Cattle Co Fall Gelbvieh and Balancer Bulls



ERTL 138J Mr CW Dillon 985 Sells as lot 45

ERTL 138J MR CW DILLON 985
 68.8%GV 28%AN Balancer Bull Double Black Heterozygous Polled
 BD: 8/22/2021 ERTL 138J AMG1517374
 BW: 77 WW: 742 YW: 1209

V A R DISCOVERY 2240

JKGF CIVIL WAR E92
 JKGF LOTTIE C92
 DBRG MR TWISTER 7195E ET

ERTL 985G TWISTER DILLY
 ERTL MISS DILLY 194E

EPD/EPD Rank	CE	BW	WW	YW	M	TM	CEM	ST	DOC	YG	CW	RE	MB
	11	1.7	89	139	22	66	7	17	13	-0.15	45	0.7	0.32
	75	95	3	4	35	5	45	15	25	15	20	15	60

	EPD	% Rank
\$Cow	123.04	15
FPI	88.08	15
EPI	156.07	15

- Out of a first calf Twister daughter
- Top 3% WW, 4% YW, 15% RE, FPI, \$Cow and EPI and top 20% CW
- WW 742 and YW 1209



JKGF Civil War E92 Sire of lots 45-48

ERTL 150J MR CW 983
 75%GV 25%AN Balancer Bull Double Black Double Polled Scur
 BD: 9/4/2021 ERTL 150J AMG1519223
 BW: 64 WW: 760 YW: 1255

V A R DISCOVERY 2240

JKGF CIVIL WAR E92
 JKGF LOTTIE C92
 DBRG MR TWISTER 7195E ET

ERTL 983G TWISTER 2311
 CCRO CAROLINA SAMMY JO 2311Z

EPD/EPD Rank

CE	BW	WW	YW	M	TM	CEM	ST	DOC	YG	CW	RE	MB
14	1	87	137	21	64	8	18	12	-0.24	50	0.89	0.35
35	85	4	5	45	10	30	10	50	2	10	2	55

	EPD	% Rank
\$Cow	132.89	5
FPI	89.8	15
EPI	152.25	15

- Show-Me-Select qualified
- Performance bull with strong carcass and feedlot merit
- 100 weaning ratio and 104 yearling ratio

ERTL 141J MR CIVIL WAR
 25%GV 25%AN Bull Homozygous Black Hmozygous Polled
 BD: 9/5/2021 ERTL 141J AMG1559297
 BW: 78 WW: 804 YW: 1228

V A R DISCOVERY 2240

JKGF CIVIL WAR E92
 JKGF LOTTIE C92

62891

EPD/EPD Rank

CE	BW	WW	YW	M	TM	CEM	ST	DOC	YG	CW	RE	MB
12	0.2	66	103	17	50	7	12	10	0.02	49	0.51	0.62
60	65	65	55	85	80	40	85	85	90	10	60	5

	EPD	% Rank
\$Cow		
FPI	82.18	35
EPI		

- High carcass bull
- 106 weaning ratio
- 804 weaning weight and 1228 yearling weight

ERTL 148J MR CIVIL WAR
 25%GV 25%AN Bull Homozygous Black Homozygous Polled
 BD: 8/22/2021 ERTL 148J AMG1551142
 BW: 77 WW: 574 YW: 970

V A R DISCOVERY 2240

JKGF CIVIL WAR E92
 JKGF LOTTIE C92

TERI TERI

EPD/EPD Rank

CE	BW	WW	YW	M	TM	CEM	ST	DOC	YG	CW	RE	MB
12	0.2	80	142	12	52	8	12	12	-0.01	37	0.38	0.53
60	65	15	2	>95	70	25	85	50	80	35	85	10

	EPD	% Rank
\$Cow		
FPI	89.29	10
EPI		

- Top 2% YW, 10% MB & FPI and 15% WW
- Civil War son that produces strong maternal values in retained females



PHG Eminence E02 Sire of lot 49

ERTL 131J MR EMINENCE ALUMNI 9003
 PB 86.7% Gelbvieh Bull Heterozygous Black Homozygous Polled
 BD: 12/27/2021 ERTL 131J AMG1530365
 BW: 82 WW: 811 YW: 1236

BABR DOMINANCE 4280B

PHG EMINENCE E02
 DDN BELLY RIVER AMBER 56A
 DLW ALUMNI 7513A ET

CCRO CAROLINA ALUMNI 9003G ET
 CCRO MISS PLAYMATE 0363X ET

EPD/EPD Rank

CE	BW	WW	YW	M	TM	CEM	ST	DOC	YG	CW	RE	MB
10	-0.1	69	96	15	49	4	15	12	-0.18	48	0.69	0.31
80	45	45	60	95	85	85	60	45	70	2	45	20

	EPD	% Rank
\$Cow	106.38	65
FPI	76.4	45
EPI	83.45	45

- Purebred Gelbvieh Bull
- Sire, Eminence E02 was the 2018 Breeder's Choice Bull Futurity Champion
- * Top 2% CW and 20% MB

Ertel Cattle Co Fall Balancer Bred Heifers

ERTEL MISS CIVIL WAR 721 ANNIE

50 41%GV 59%AN Balancer Cow Double Black Homozygous Polled
 BD: 8/9/2021 ERTL 144J AMGV1517376

V A R DISCOVERY 2240

JKGF CIVIL WAR E92

JKGF LOTTIE C92
 TMGC SB ARNOLD 225W

ØGGP

ERTL 721E ARNOLD COMPLEMENT

ERTL MISS PEGGY C521

	EPD	% Rank
\$Cow	107.54	40
FPI	90	10
EPI	165.72	10

EPD/EPD Rank	CE	BW	WW	YW	M	TM	CEM	ST	DOC	YG	CW	RE	MB
	14	-1.5	75	123	21	59	8	15	11	0.03	38	0.31	0.56
	35	30	30	20	45	30	30	40	75	85	40	85	10

Civil War daughter with outstanding EPD profile with low birth, excellent calving ease, strong performance, high marbling, feeder profit index, \$Cow and EPI.
 AI'd 11-22-22 to ERTL 106J Mr Warrior (AMGV1522841). PE 11-22-22 to 3-01-23 to DBRG Mr Twister 7195E ET (AMGV1390654). PE 1-08-23 to 3-01-23 to ERTL F39H WT Twister (AMGV1480238).



JKGF Civil War E92 Sire of lots 50-53

ERTEL MISS CIVIL WAR 146J MISS CW 2311

51 68%GV 31%AN Balancer Cow Homozygous Black Homozygous Polled
 BD: 8/28/2021 ERTL 146J AMGV1519225

V A R DISCOVERY 2240

JKGF CIVIL WAR E92

JKGF LOTTIE C92
 VRT LAZY TV SAM U451

ØGGP

CCRO CAROLINA SAMMY JO 2311Z

CCRO MS HOT SAUCE 0324X

	EPD	% Rank
\$Cow	123.51	15
FPI	85.35	30
EPI	147.13	20

EPD/EPD Rank	CE	BW	WW	YW	M	TM	CEM	ST	DOC	YG	CW	RE	MB
	11	1.2	87	133	20	64	6	17	14	-0.17	56	0.86	0.23
	75	85	4	10	55	10	65	15	15	10	3	3	80

The Civil War daughters are super in production. He was in the top 3 used AI sires in the breed over the past 2 years.
 AI'd 11-22-22 to Wilks Regiment (AAA19401188). PE 11-22-22 to 3-01-23 to DBRG Mr Twister 7195E ET (AMGV1390654). PE 1-08-23 to 3-01-23 to ERTL F39H WT Twister (AMGV1480238).



ERTL 106J Mr Warrior AI Service Sire of lot 50

ERTEL MISS CIVIL WAR 139J

52 25%GV 25%AN Cow Double Black Double Polled
 BD: 9/5/2021 ERTL 139J AMGV1551141

V A R DISCOVERY 2240

JKGF CIVIL WAR E92

JKGF LOTTIE C92

ØGGP

60335

EPD/EPD Rank

	EPD	% Rank
\$Cow		
FPI	81.98	35
EPI		

EPD/EPD Rank	CE	BW	WW	YW	M	TM	CEM	ST	DOC	YG	CW	RE	MB
	12	-0.7	63	97	18	50	7	12	10	0.02	50	0.52	0.62
	60	40	80	70	75	80	40	85	85	90	10	60	5

A 25% Gelbvieh bred heifer sired by Civil War with strong marbling and feeder profit index. This bred heifer is a high volume female with a great look.
 AI'd 11-22-22 to ERTL 067H MR Twister Ferdinand (AMGV1477312). PE 11-22-22 to 3-01-23 to DBRG Mr Twister 7195E ET (AMGV1390654). PE 1-08-23 to 3-01-23 to ERTL F39H WT Twister (AMGV1480238).

ERTEL MISS CIVIL WAR 116J MISS MIF 804

53 40%GV 59%AN Balancer Cow Double Black Homozygous Polled
 BD: 3/6/2021 ERTL 116J AMGV1504674

SAF FOCUS OF ER

MYTTY IN FOCUS

MYTTY COUNTESS 906
 RWL 122Y

ØGGP

ERTL 804F LINCOLN 4145

CCRO CAROLINA 4145B

	EPD	% Rank
\$Cow	111.96	35
FPI	91.88	10
EPI	107.94	55

EPD/EPD Rank	CE	BW	WW	YW	M	TM	CEM	ST	DOC	YG	CW	RE	MB
	17	0.1	87	128	20	63	10	16	15	0.04	32	0.18	0.43
	10	65	4	15	55	15	10	30	5	90	60	>95	30

Maternal sister to our Lot 1 bull. Super cow family with strong maternal production values combined with performance and carcass values.
 AI'd 11-22-22 to ERTL 067H MR Twister Ferdinand (AMGV1477312). PE 11-22-22 to 3-01-23 to DBRG Mr Twister 7195E ET (AMGV1390654). PE 1-08-23 to 3-01-23 to ERTL F39H WT Twister (AMGV1480238).



Ertel Cattle Co Spring Balancer Open Heifers



Tehama Tahoe B767 Sire of lots 54-55

ERTL 227K MISS TAHOE 33G

54 34%GV 64%AN Balancer Cow Heterozygous Black Heterozygous Polled
BD: 2/24/2022 ERTL 227K AMGV1533702

Y238 TEHAMA UPWARD Y238

TEHAMA TAHOE B767
TEHAMA MARY BLACKBIRD Y684
JKGF CHIEF JUSTICE C205

ERTL 33G C JUSTICE EMBLAZON
ERTL ELSIE'S MS EMBLAZON

		EPD	% Rank
\$Cow	131.52	5	
FPI	98.16	2	
EPI	184.28	3	

CE	BW	WW	YW	M	TM	CEM	ST	DOC	YG	CW	RE	MB
12	0.3	87	141	23	67	5	19	15	-0.04	59	0.84	0.69
60	70	4	3	25	3	80	4	5	60	2	3	3

Tahoe daughters are super with a true combination of traits we strive to produce here ECC. Calving ease, performance, maternal and carcass values. Sells open and ready to breed this spring.



DBRG Mr Twister 7195E ET Sire of lots 56-57

ERTL 7K MISS TAHOE

55 25%GV 75%AN Balancer Cow Double Black Double Polled
BD: 3/6/2022 WEIM 7K AMGV1542040

TEHAMA UPWARD Y238

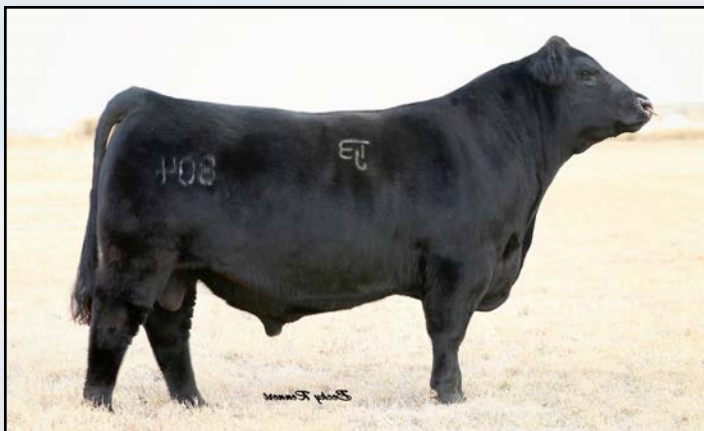
TEHAMA TAHOE B767
TEHAMA MARY BLACKBIRD Y686
KCF BENNETT Y504

MBCC 10F CATHY
MBCC CHRISTINE 53Z ET

		EPD	% Rank
\$Cow	117.93	20	
FPI	101.13	1	
EPI	214.14	1	

CE	BW	WW	YW	M	TM	CEM	ST	DOC	YG	CW	RE	MB
9	1.1	99	155	18	67	3	17	13	-0.01	60	0.61	0.64
95	85	1	1	75	3	95	15	25	70	2	25	5

Tahoe daughters are super with a true combination of traits we strive to produce here ECC. Calving ease, performance, maternal and carcass values. Sells open and ready to breed this spring.



TJB Rebel Yell 804F ET Sire of lot 58

ERTL 206K MISS TWISTER 825

56 75%GV 25%AN Balancer Cow Homozygous Black Homozygous Polled
BD: 3/27/2022 ERTL 206K AMGV1536681

DBRG TWISTER 451B

DBRG MR TWISTER 7195E ET
BTBR MS BLK CROSS 6044
DBRG MR BLK GRANITE 6160D ET

ERTL 825F GRANITE EDIE
TMGC SB MS EDISON 26C

		EPD	% Rank
\$Cow	89.56	85	
FPI	77.76	70	
EPI	105.46	60	

CE	BW	WW	YW	M	TM	CEM	ST	DOC	YG	CW	RE	MB
12	-0.1	77	106	25	63	6	12	11	-0.16	34	0.63	0.13
60	60	25	60	10	15	65	85	75	15	55	25	95

The Twister females are super brood cows and production females that are sound high volume cows that are producing some of our top bulls selling. Sells open and ready to breed this spring.

ERTL 212K MISS TWISTER 514

57 75%GV 19%AN Balancer Cow Homozygous Black/Baldy Homozygous Polled
BD: 3/21/2022 ERTL 212K AMGV1536436

DBRG TWISTER 451B

DBRG MR TWISTER 7195E ET
BTBR MS BLACK CROSS 6044
MBCC 20/20 VISION

ERTL MISS LORI C514
ERTL T14

		EPD	% Rank
\$Cow	108.09	50	
FPI	69.81	90	
EPI	89.73	60	

CE	BW	WW	YW	M	TM	CEM	ST	DOC	YG	CW	RE	MB
13	-0.6	63	98	19	51	7	16	14	-0.12	17	0.29	0.1
45	45	80	70	65	75	40	35	10	50	>95	95	95

The Twister females are super brood cows and production females that are sound high volume cows that are producing some of our top bulls selling. Sells open and ready to breed this spring.

ERTL 240K MISS REBEL 6F6

58 50%GV 50%AN Balancer Cow Homozygous Black Homozygous Polled
BD: 2/24/2022 ERTL 240K AMGV1533703

JRI PROBITY 254D28

TJB REBEL YELL 804F ET
TJB ANISSA 921U ET
DBRG MR BLK GRANITE 6160D ET

ERTL 6F6 DITKA WATCHMAN
ERTL 6C6

		EPD	% Rank
\$Cow	102.5	55	
FPI	74.38	85	
EPI	140.89	20	

CE	BW	WW	YW	M	TM	CEM	ST	DOC	YG	CW	RE	MB
8	3.2	76	119	25	63	3	14	11	-0.03	53	0.7	0.2
>95	>95	30	25	10	15	95	55	75	65	5	15	90

Daughter of a past Peoples Choice Balancer Bull Futurity Champion and National Champion Balancer Bull, TJB Rebel Yell 804F ET. His daughters have an attractive look with excellent depth of body. Sells open and ready to breed this spring.

Ertel Cattle Co Spring Gelbvieh and Balancer Open Heifers

ERTL 10K MISS SAGUARO

59 56%GV 51%AN Balancer Cow Double Black Double Polled
BD: 3/7/2022 WEIM 10K AMGV1542042

TMMW DESTINATION 82Y
BTBR BTBR SAGUARO 8111F ET
JEB BCC MISS OBJECTIVE 41W
JKGF DITKA C85

ØGGP

	EPD	% Rank
\$Cow	107.68	40
FPI	96.69	2
EPI	193.89	3

MBCC 6F GWENDOLYNN

EPD/EPD Rank MBCC MEGAN 218UB

CE	BW	WW	YW	M	TM	CEM	ST	DOC	YG	CW	RE	MB
14	-2.3	90	143	20	64	9	15	11	-0.05	56	0.81	0.43
35	20	2	3	55	10	15	40	75	55	3	4	35

We used Saguro 8111F in our program to offer a different genetic package in both bulls and females to our customers. His genetics blend well with our focus of strong genetic trait combinations to fit industry needs. Lots 59-60 are both heifers that would fit well near the top of our open heifer group. Sells open and ready to breed this spring.



BTBR Saguro 8111F ET Sire of lots 59-60

ERTL 250K MISS SAGURO 801

60 53%GV 47%AN Balancer Cow Homozygous Black Homozygous Polled
BD: 2/27/2022 ERTL 250K AMGV1534178

TMMW DESTINATION 82Y
BTBR BTBR SAGUARO 8111F ET
JEB BCC MISS OBJECTIVE 41W
CCRO CAROLINA LEVERAGE 3214A

ØGGP

	EPD	% Rank
\$Cow	104.22	50
FPI	87.92	20
EPI	144.36	20

ERTL 801F LEVERAGE ERICA
PANTER CR K ERICA 149

CE	BW	WW	YW	M	TM	CEM	ST	DOC	YG	CW	RE	MB
17	-3.2	70	104	20	55	12	14	10	0.01	26	0.32	0.52
10	10	55	65	55	55	2	55	90	80	85	85	15

A Saguro 8111F daughter we like very much in terms of volume and broody look at an early age. Lots 59-60 are both heifers that would fit well near the top of our open heifer group. Sells open and ready to breed this spring.



Panther CR Dually 0262 Sire of lots 61-63

ERTL 216K MISS DUALY 965

61 41%GV 59%AN Balancer Cow Homozygous Black Heterozygous Polled
BD: 3/20/2022 ERTL 216K AMGV1536441

DL DUALY
PANTHER CR DUALY 0262
128 PANTHER CR BLACKCAP 128
DBRG MR TWISTER 7195E ET

ØGGP

	EPD	% Rank
\$Cow		
FPI	97.67	2
EPI		

ERTL 965G TWISTER 3165
CCRO CAROLINA 3165A

CE	BW	WW	YW	M	TM	CEM	ST	DOC	YG	CW	RE	MB
16	-2.3	84	127	19	61	9	15	11	-0.02	54	0.6	0.61
15	20	10	15	65	20	15	40	75	70	5	30	10

Daughter of Panther CR Dually 0262, second high selling bull at Panther Creek in 2021 that we selected to add growth, marbling, and calving ease to program. These young females are very impressive and have a great look to combine with EPD genetic trait strength in CE, BW, growth and carcass. Her dam is a very strong Twister daughter. Sells open and ready to breed this spring.

ERTL 233K MISS DUALY 961

62 30%GV 67%AN Balancer Cow Homozygous Black Homozygous Polled
BD: 3/14/2022 ERTL 233K AMGV1535501

DL DUALY
PANTHER CR DUALY 0262
PANTHER CR BLACKCAP 128
DBRG MR TWISTER 7195E ET

ØGGP

	EPD	% Rank
\$Cow		
FPI	95.36	3
EPI		

ERTL 961G TWISTER MOLLY
MBCC MOLLY 218D

CE	BW	WW	YW	M	TM	CEM	ST	DOC	YG	CW	RE	MB
14	-2.5	78	122	19	58	7	17	14	0.05	53	0.48	0.69
35	15	20	20	65	35	45	15	15	90	5	55	3

Daughter of Panther CR Dually 0262, second high selling bull at Panther Creek in 2021 that we selected to add growth, marbling, and calving ease to program. These young females are very impressive and have a great look to combine with EPD genetic trait strength in CE, BW, growth and carcass. Her dam is a very strong Twister daughter. Sells open and ready to breed this spring.

ERTL 207K MISS DUALY 926

63 25%GV 63%AN Balancer Cow Homozygous Black Homozygous Polled
BD: 3/18/2022 ERTL 207K AMGV1536483

DL DUALY
PANTHER CR DUALY 0262
PANTHER CR BLACKCAP 128
DBRG MR TWISTER 7195E ET

ØGGP

	EPD	% Rank
\$Cow		
FPI	96.83	2
EPI		

ERTL 926G TWISTER
ERTL MISS BILLIE C526

CE	BW	WW	YW	M	TM	CEM	ST	DOC	YG	CW	RE	MB
14	-1.3	89	141	20	65	10	14	15	0.05	59	0.6	0.52
35	35	3	3	55	10	10	55	5	90	2	30	15

Daughter of Panther CR Dually 0262, second high selling bull at Panther Creek in 2021 that we selected to add growth, marbling, and calving ease to program. These young females are very impressive and have a great look to combine with EPD genetic trait strength in CE, BW, growth and carcass. Her dam is a very strong Twister daughter. She is halter broke to lead. Sells open and ready to breed this spring.

ERTL 271K MISS D020 HOPE

64 PB 82.5% Gelbvieh Cow Heterozygous Black Homozygous Polled
BD: 3/22/2022 ERTL 271K AMGV1536437

DLW NEW FRONTIER 33A ET
JKGF D020
JKGF MADDY MAE Z020
BNC MR. HOJER D6268

ØGGP

	EPD	% Rank
\$Cow		
FPI	72.92	65
EPI		

CPGG MS. PRAIRIE HOPE 9H
CPGG MS PRAIRIE STUBBY 210B

CE	BW	WW	YW	M	TM	CEM	ST	DOC	YG	CW	RE	MB
10	1.3	66	92	25	58	7	12	12	-0.15	32	0.62	0.28
80	80	60	70	20	35	35	90	45	85	40	60	30

Purebred Gelbvieh heifer out of Prairie Hope 9H, one of the top selling bred heifers in the Prairie Grove dispersal we added to our program. Very nice, clean made heifer with excellent brood cow look. Sells open and ready to breed.

Ertel Cattle Co Spring Gelbvieh and Balancer Open Heifers



MIBC Franchise F806 Sire of lots 65-66

ERTL 235K MISS FRANCHISE 863

65 75%GV 25%AN Balancer Cow Homozygous Black Homozygous Polled
BD: 3/11/2022 ERTL 235K AMGV1535101

WVG C28
MJBC FRANCHISE F806
ABCS 026C
JKGF DITKA C85
ERTL 863F JUNEBUG
EPD/EPD Rank MBCC JEN 63Z ET

	EPD	% Rank
\$Cow	90.43	80
FPI	81.08	50
EPI	122.79	40

CE	BW	WW	YW	M	TM	CEM	ST	DOC	YG	CW	RE	MB
13	0.5	81	124	27	67	7	12	13	-0.06	43	0.52	0.16
45	75	15	20	4	3	45	85	25	50	25	45	95

Franchise F806 has produced some of the top selling bulls and females in the breed over the past 3 years. He has worked really well in our program as we are also selling one of our top bulls sired by him as lot 4.

Sells open and ready to breed this spring.



PHS Porohart O'Glory 935G Sire of lots 67-68

ERTL 224K MISS FRANCHISE 813

66 72%GV 28%AN Balancer Cow Homozygous Black Homozygous Polled
BD: 2/26/2022 ERTL 224K AMGV1533926

WVG C28
MJBC FRANCHISE F806
ABCS 026C
CCRO CAROLINA LEVERAGE 3214A
ERTL 813F LEVERAGE TBIRD
EPD/EPD Rank CCROSS KAYOKA 4300B

	EPD	% Rank
\$Cow		
FPI	84.84	30
EPI		

CE	BW	WW	YW	M	TM	CEM	ST	DOC	YG	CW	RE	MB
15	-3.3	72	104	26	62	10	14	14	-0.18	30	0.76	0.32
25	10	45	65	10	15	10	55	15	10	70	10	60

Franchise F806 has produced some of the top selling bulls and females in the breed over the past 3 years. He has worked really well in our program as we are also selling one of our top bulls sired by him as lot 4. Lot 66 ranks very high in EPD strength for many of her genetic traits.

Sells open and ready to breed this spring.

ERTL 202K MISS O'GLORY 4142

67 78%GV 31%AN Cow Double Black Homozygous Polled
BD: 3/1/2022 ERTL 202K AMGV1534113

OGSG OGSG CENTURION 120C
PHS PROHART OL' GLORY 935G
PHS PROHART BRANDY 516C
CCRO CAROLINA EXCLUSIVE 1230Y
CCRO CAROLINA 4142B
EPD/EPD Rank CCRO MOO-CHA-CHA 9390W

	EPD	% Rank
\$Cow	131.05	10
FPI	79.58	45
EPI	76.8	70

CE	BW	WW	YW	M	TM	CEM	ST	DOC	YG	CW	RE	MB
6	0.7	70	99	20	55	2	19	9	-0.14	37	0.69	0.49
>95	75	50	65	55	55	>95	5	95	45	35	25	15

Sired by 2021 Breeder's Choice Bull Futurity Champion, O'Glory 935G. This will be the some of the first daughters of O'Glory to sell. Excellent carcass values.

Sells open and ready to breed this spring.

ERTL 247K MISS O'GLORY 972

68 57%GV 43%AN Balancer Cow Double Black Homozygous Polled
BD: 2/27/2022 ERTL 247K AMGV1534106

OGSG OGSG CENTURION 120C
PHS PROHART OL' GLORY 935G
PHS PROHART BRANDY 516C
RITO 616 OF 4B20 6807
ERTL 972G KATE'S RITO 467
EPD/EPD Rank ERTL 467E DITKA KATE

	EPD	% Rank
\$Cow		
FPI	81.9	45
EPI		

CE	BW	WW	YW	M	TM	CEM	ST	DOC	YG	CW	RE	MB
14	-2.2	70	105	21	56	7	21	11	-0.03	20	0.44	0.35
35	20	55	60	45	50	45	1	75	65	95	60	55

Sired by 2021 Breeder's Choice Bull Futurity Champion, O'Glory 935G. This will be the some of the first daughters of O'Glory to sell. Excellent calving ease and longevity.

Sells open and ready to breed this spring.



ERTL 1K MISS WATCHMAN

69 38%GV 62%AN Balancer Cow Homozygous Black Homozygous Polled
BD: 2/26/2022 WEIM 1K AMGV1542034

VRT LAZY TV WATCHMAN W021
DLW WATCHMAN 2501B
DLW MS X102 2501Z OF 7105
PETERSON DISCOVERY 5108
WEIM 38F BECKY
EPD/EPD Rank ERTL D605

	EPD	% Rank
\$Cow	90.59	80
FPI	89.4	15
EPI	126.75	35

CE	BW	WW	YW	M	TM	CEM	ST	DOC	YG	CW	RE	MB
16	-1.4	75	123	20	58	9	12	13	0.01	45	0.49	0.52
15	30	30	20	55	35	15	85	25	80	20	50	15

A Watchman daughter that has genetic traits that are ideal for the industry. A true combination female that has volume, EPD strength and great brood cow look.

Sells open and ready to breed this spring.

Ertel Cattle Co Spring Balancer Open Heifers

ERTL 20K MISS AUGGIE

70 48%GV 52%AN Balancer Cow Double Black Homozygous Polled
BD: 4/4/2022 WEIM 20K AMGV1543154

DBRG WCR 59

MBCC AUGGIE 18H

MBCC SARAH 1C ET
MBCC REWARD 4F

WEIM 26H

EPD/EPD Rank MBCC 18F JILL

													EPD	% Rank	
													\$Cow		
													FPI	92.17	10
													EPI		

CE	BW	WW	YW	M	TM	CEM	ST	DOC	YG	CW	RE	MB
15	-0.1	75	121	21	58	10	11	11	-0.05	38	0.42	0.71
25	60	30	25	45	35	10	90	75	55	40	65	3

Calving ease, performance, maternal and high carcass female sired by Auggie 18H. Excellent heifer with a great brood cow look.
Sells open and ready to breed this spring.

ERTL 21K MISS AUGGIE

71 50%GV 50%AN Balancer Cow Double Black Homozygous Polled
BD: 4/12/2022 WEIM 21K AMGV1543155

DBRG WCR 59

MBCC AUGGIE 18H

MBCC SARAH 1C ET
BTBR BTBR NEVADA 1170Y

MBCC 10G

EPD/EPD Rank MBCC SARAH 1C ET

													EPD	% Rank	
													\$Cow	89.82	85
													FPI	92.23	10
													EPI	102.63	60

CE	BW	WW	YW	M	TM	CEM	ST	DOC	YG	CW	RE	MB
20	-3	66	106	25	58	14	12	11	-0.03	26	0.23	0.73
1	10	70	60	10	35	1	85	75	65	85	95	2

Calving ease, maternal, carcass and feedlot merit heifer with a strong cow family.
Sells open and ready to breed this spring.

ERTL 17K MISS AUGGIE

72 53%GV 47%AN Balancer Cow Double Black Double Polled
BD: 3/27/2022 WEIM 17K AMGV1543151

DBRG WCR 59

MBCC AUGGIE 18H

MBCC SARAH 1C ET
CCRO CCROSS CAROLINA 4227B

MBCC BOBBI ANN 7E

EPD/EPD Rank JDKG MISS GOV INFOCUS 563Z

													EPD	% Rank	
													\$Cow	98.1	65
													FPI	92.86	5
													EPI	125.62	35

CE	BW	WW	YW	M	TM	CEM	ST	DOC	YG	CW	RE	MB
17	0.1	84	134	24	67	12	13	11	0.05	52	0.35	0.5
10	65	10	10	20	3	2	70	75	90	10	80	20

Calving ease, performance, maternal and high carcass female sired by Auggie 18H. Excellent heifer with a great brood cow look.
Sells open and ready to breed this spring.

ERTL 12K MISS REWARD

73 45%GV 53%AN Balancer Cow Double Black Homozygous Polled
BD: 3/8/2022 WEIM 12K AMGV1542044

KCF BENNETT Y6

MBCC REWARD 4F

ERTL MISS SARAH C518
JKGF DITKA C85

MBCC 3F CHARLOTTE

EPD/EPD Rank MBCC SARAH 1C ET

													EPD	% Rank	
													\$Cow		
													FPI	86.73	20
													EPI		

CE	BW	WW	YW	M	TM	CEM	ST	DOC	YG	CW	RE	MB
23	-4.1	66	100	17	50	14	19	13	-0.01	39	0.66	0.46
1	4	70	75	80	85	1	4	25	70	35	20	25

Calving ease and carcass heifer that ranks very high in all of those genetic traits
Sells open and ready to breed this spring.



Ertel Cattle Co Balancer Cross Commercial Bred Heifers

Commercial Fall Bred Heifers

All heifers Balancer Sired

All Commercial Bred Heifers Have DNA Igenity Profiles on Page 24

Lot	ID	BD	Color	Sire	AI Sire on 11-21-22	PE Sire 11-22-22 to 3-1-23	PE Sire 1-8-23 to 3-1-23
74	J89	06-15-2021	Black	ERTL 964G MR D162 by 62E	JKGF DITKA C85	DBRG Mr Twister 7195E ET	ERTL F39H WT Twister
75	J87	06-16-2021	Black	ERTL 964G MR D162 by 62E	JKGF DITKA C85	DBRG Mr Twister 7195E ET	ERTL F39H WT Twister
76	132J	08-29-2021	Black	JKGF CIVIL WAR E92	ERTL 067H FERDINAND	DBRG Mr Twister 7195E ET	ERTL F39H WT Twister
77	142J	09-01-2021	Black	JKGF CIVIL WAR E92	JKGF DITKA C85	DBRG Mr Twister 7195E ET	ERTL F39H WT Twister
78	6147J	09-15-2021	Black	ERTL D674	ERTL 106J MR WARRIER	DBRG Mr Twister 7195E ET	ERTL F39H WT Twister
79	Y10	09-15-2021	Black	ERTL TWISTER 991G	JKGF DITKA C85	DBRG Mr Twister 7195E ET	ERTL F39H WT Twister
80	Y11	09-15-2021	Black	ERTL TWISTER 991G	JKGF DITKA C85	DBRG Mr Twister 7195E ET	ERTL F39H WT Twister
81	Y12	09-15-2021	Black	NIAGARA 30G4 ET	JKGF DITKA C85	DBRG Mr Twister 7195E ET	ERTL F39H WT Twister
82	Y13	09-15-2021	Black	NIAGARA 30G4 ET	JKGF DITKA C85	DBRG Mr Twister 7195E ET	ERTL F39H WT Twister
83	Y14	09-15-2021	Black	NIAGARA 30G4 ET	JKGF DITKA C85	DBRG Mr Twister 7195E ET	ERTL F39H WT Twister
84	Y3	09-15-2021	Black	NIAGARA 30G4 ET	JKGF DITKA C85	DBRG Mr Twister 7195E ET	ERTL F39H WT Twister
85	Y4	09-15-2021	Black	NIAGARA 30G4 ET	JKGF DITKA C85	DBRG Mr Twister 7195E ET	ERTL F39H WT Twister
86	Y5	09-15-2021	Black	NIAGARA 30G4 ET	ERTL 067H FERDINAND	DBRG Mr Twister 7195E ET	ERTL F39H WT Twister
87	Y6	09-15-2021	Black	NIAGARA 30G4 ET	JKGF DITKA C85	DBRG Mr Twister 7195E ET	ERTL F39H WT Twister
88	Y7	09-15-2021	Black	NIAGARA 30G4 ET	JKGF DITKA C85	DBRG Mr Twister 7195E ET	ERTL F39H WT Twister
89	Y8	09-15-2021	Black	NIAGARA 30G4 ET	JKGF DITKA C85	DBRG Mr Twister 7195E ET	ERTL F39H WT Twister
90	Y9	09-15-2021	Black	NIAGARA 30G4 ET	JKGF DITKA C85	DBRG Mr Twister 7195E ET	ERTL F39H WT Twister
91	5917J	12-01-2021	Black	ERTL D674	JKGF DITKA C85	DBRG Mr Twister 7195E ET	ERTL F39H WT Twister
92	5919K	01-10-2022	Black	D28 EF Complement by B28	JKGF DITKA C85	DBRG Mr Twister 7195E ET	ERTL F39H WT Twister
93	6149K	02-01-2022	Black	D28 EF Complement by B28	JKGF DITKA C85	DBRG Mr Twister 7195E ET	ERTL F39H WT Twister



Ertel Cattle Co Balancer Cross Commercial Open Heifers

Commercial Spring 2022 Open Heifers All heifers Balancer or Angus Sired

Lot	ID	BD	Color	Sire
94	52pk	03-01-2022	Black	Black Baron/D28 or D674
95	54pk	03-01-2022	Black	Black Baron/D28 or D674
96	55pk	03-01-2022	Black	Black Baron/D28 or D674
97	56pk	03-01-2022	Black	Black Baron/D28 or D674
98	57pk	01-19-2022	Black	D28 EF Complement by B28
99	58pk	03-01-2022	Black	Black Baron/D28 or D674
100	59pk	03-01-2022	Black	Black Baron/D28 or D674
101	61pk	03-01-2022	Black	Black Baron/D28 or D674
102	64pk	03-01-2022	Black	Black Baron/D28 or D674
103	969K	03-01-2022	Black	ERTL 991G or ERTL 30G4
104	5918J	Spring 2022	Black	ERTL D674
105	6111K	Spring 2022	Black	Unknown
106	6112K	04-15-2022	Black	ERTL 938G
107	6113K	04-15-2022	Black	ERTL 938G
108	6114K	04-15-2022	Black	ERTL 938G
109	6146K	03-01-2022	Black	B/D28 EF Complement by B28
110	20	03-01-2022	Black	Sampson Limelight or Black Baron
111	3	03-01-2022	Black	Sampson Limelight or Black Baron
112	9	03-01-2022	Black	Sampson Limelight or Black Baron
113	13	03-01-2022	Black	Sampson Limelight or Black Baron
114	51	03-01-2022	Black	Sampson Limelight or Black Baron
115	59	03-01-2022	Black	Sampson Limelight or Black Baron



Ertel Cattle Company Commercial Fall Bred Heifer DNA Igenity Beef Profile

Lot	BW	CED	CEM	DOC	HPR	MILK	STAY	WW	ADG	YW	RFI	TEND	MARB	REA	FAT	HCW	SC
74	5	7	8	5	5	5	6	6	5	6	8	5	5	7	5	3	4
75	5	8	7	4	6	3	8	6	5	5	8	5	5	7	4	4	5
76	6	7	9	2	7	2	8	8	6	7	7	5	7	6	6	7	5
77	7	6	3	6	7	3	5	7	8	8	7	8	7	8	5	9	6
78	6	5	6	5	5	6	5	5	5	5	5	3	6	6	5	5	6
79	6	7	6	2	5	6	4	5	5	5	5	5	8	4	7	5	8
80	6	5	3	2	5	5	4	5	4	5	4	3	4	7	5	6	6
81	6	8	8	5	7	5	6	8	6	7	7	7	7	7	5	6	6
82	5	7	7	2	7	7	5	5	5	5	4	7	6	6	6	5	6
83	8	5	6	6	6	7	6	6	7	7	8	4	6	8	5	8	6
84	5	5	5	3	8	6	5	7	7	7	7	NR	6	7	7	6	7
85	5	7	7	7	8	5	7	6	7	6	8	5	7	5	7	6	6
86	7	4	5	3	6	6	3	6	6	6	5	7	6	6	6	7	7
87	6	7	8	5	8	4	4	7	7	7	6	5	7	7	7	7	7
88	6	5	5	6	8	4	4	5	7	6	9	7	6	7	6	6	7
89	6	6	6	3	5	5	6	6	6	6	6	4	5	8	6	7	10
90	6	6	5	3	8	5	3	8	6	7	6	7	5	6	6	8	8
91	4	6	6	5	4	4	4	6	5	5	5	3	6	6	6	7	8
92	4	6	7	5	3	5	7	2	3	2	7	4	5	4	7	5	5
93	7	3	5	5	5	3	6	4	4	4	6	4	5	6	6	5	4

Definitions of Traits Reported

MATERNAL TRAITS

Birth weight (BW) — Variation in birth weight a heifer or bull will pass along to its offspring. A higher score indicates greater genetic potential for heavier birth weight.

Calving ease direct (CED) — Percentage of unassisted births, indicating greater probability a calf will be born unassisted out of a first-calf heifer. Genetic factors such as birth weight and shape of the calf are included in CED. A higher value is greater calving ease.

Calving ease maternal (CEM) — The probability a first-calf heifer will calve unassisted. CEM includes all genetic factors that impact a heifer's ability to calve unassisted, such as pelvic area and her genetic contribution to birth weight. A higher value is greater calving ease.

Stayability (STAY) — The chance a heifer will remain in the herd as a productive cow until at least six years of age. A higher value is desired.

Heifer pregnancy rate (HPR) — A heifer's potential to conceive during breeding season, relative to other heifers. A higher value is desired.

Docility (DOC) — The animal's genetic potential to be calm or have calm offspring. Higher scores indicate a higher probability of progeny with acceptable disposition.

Milk (M) — Expressed as pounds of calf weaning weight affected by the milk production of a calf's dam. This is not a prediction of actual pounds of milk produced.

PERFORMANCE TRAITS

Residual feed intake (RFI) — This is an indicator of feed efficiency. It is the difference in animals' daily consumption of feed to achieve the same level of daily gain. Lower RFI indicates greater feed efficiency.

Average daily gain (ADG) — Based on pounds of gain per day. The Igenity score for ADG identifies an animal's genetic potential for post-weaning growth.

Weaning weight (WW) — Pounds at age of 205 days.

Yearling weight (YW) — Pounds at age of 365 days.

CARCASS TRAITS

Tenderness (TEND) — Animals' genetic potential for carcass tenderness as measured by the Warner-Bratzler Shear Force test. A higher score indicates greater tenderness.

USDA marbling (MARB) — Marbling score indicates the degree of marbling in the rib eye at the twelfth rib expressed in USDA marbling units.

Ribeye area (REA) — Estimates muscling in a beef carcass and is measured in square inches of the ribeye muscle at the twelfth rib.

Fat thickness (FAT) — Scored as depth of fat in inches over the ribeye muscle at the twelfth rib. Higher fat thickness scores equate to lower lean yield.

Hot carcass weight (HCW) — Hot carcass weight is the hot or unchilled weight of the carcass after slaughter and the removal of the head, hide, intestinal tract, and internal organs.

CROSSBREEDING is easy with GELBVIEWH

“the Continental breed of choice”

PERFORMANCE

Gelbvieh maternal influence in a crossbreeding system offers added fertility, increased longevity, and more pounds of calf weaned per cow exposed.

PRODUCTIVITY

The crossbred female is 30 percent more productive over her lifetime. Greater productivity equates to more money in the bank.

PROFITABILITY

Using Gelbvieh genetics can increase profitability through heavier weaning weights, feed bunk efficiency as well as heavier, faster gaining feeder cattle.



Gelbvieh genetics deliver *maternal superiority* in planned crossbreeding systems. Highly productive cows with adaptability, versatility, and stayability can have a positive impact on your bottom line.

Andrew Proke
PHOTOGRAPHY © 2017



Ginger Ertel
26694 Anchor Way
Greentop, MO 63546

First Class Mail

